



THE GOLD STANDARD IN SMOKED FISH

North America's premier smoked-fish purveyor, blending four generations of family craftsmanship with top-tier sourcing and innovation. They meticulously select wild-caught and responsibly farmed salmon, herring, sablefish—supporting sustainability and food safety from fin to tail in state-of-the-art, kosher-certified facilities. Their commitment to quality shines through hand-filleting, small-batch smoking, and thoughtful packaging that preserves flavor and freshness, whether you're enjoying their renowned "Fish Friday" offerings or retail favorites like pepper smoked salmon. Rooted in Brooklyn since 1906 and still family-owned, Acme's century-long legacy is about more than smoked fish—it's about community, taste, and tradition done right.

BROOKLYN BORN, GLOBALLY LOVED

- › **Generations of Expertise:** Family-owned since 1906, blending tradition with innovation in smoked fish.
- › **Premium, Responsible Sourcing:** Wild-caught and farm-raised fish with full traceability and sustainability.
- › **Cutting-Edge Production:** Kosher-certified facilities ensure safety, scale, and superior freshness.
- › **Creative Flavor Selection:** From classic nova to bold pepper and gravlax, variety sets them apart.

CUTOFF TIME

Order Monday by 3PM, for landing on Friday.





BLUE HILL BAY

Handcrafted in small batches, Blue Hill Bay smoked fish features premium cuts and clean, natural flavors—like their trout, sable, and salmon.



CUT TYPE

P/S	Presliced
WHL	Whole Fish
LG	Large
MD	Medium

SMOKED SALMON

RETAIL	15078	12/4 OZ	SCOTTISH SMOKED SALMON
	42050	12/4 OZ	PEPPERED SMOKED SALMON
	42074	12/4 OZ	BAKED SMOKED SALMON
	44061	12/4 OZ	SMOKED SALMON

FOODSERVICE	44054	2/3 LB	P/S SMOKED SALMON 2PK
-------------	-------	--------	-----------------------

SMOKED TROUT

RETAIL	41053	11/5 OZ	SMOKED TROUT FILLETS
	11053	10/16 OZ	SMOKED TROUT FILLETS

SMOKED SABLEFISH

RETAIL	43385	12/3 OZ	WILD ALASKAN SMOKED SABLEFISH
--------	-------	---------	-------------------------------

SMOKED WHITEFISH

FOODSERVICE	805016	8-9/2 LB	WHL SMOKED WHITEFISH 18LB BOX
-------------	--------	----------	-------------------------------

THAWED - SHELF LIFE 18 DAYS
THAWED - SHELF LIFE 18 DAYS
THAWED - SHELF LIFE 18 DAYS
THAWED - SHELF LIFE 18 DAYS

THAWED - SHELF LIFE 45 DAYS

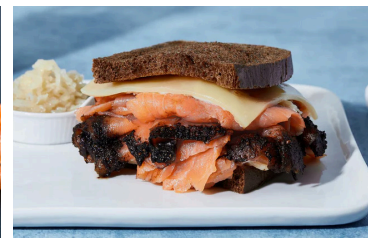
THAWED - SHELF LIFE 18 DAYS
THAWED - SHELF LIFE 18 DAYS

THAWED - SHELF LIFE 18 DAYS

THAWED - SHELF LIFE 21 DAYS

FOODSERVICE

Consistent, chef-trusted cuts of nova, whitefish, sable, and sockeye salmon—ideal for high-volume kitchens without compromising on flavor or presentation.



SMOKED SALMON

TRADITIONAL	01071	6/3 LB	SMOKED NOVA BACON-CUT SALMON
	03044	3/4 LB	SMOKED EASTERN NOVA FRESH
	03434	2/3 LB	P/S NORWEGIAN SMOKED SALMON
	04041	10/3 LB	WHL NORWEGIAN SMOKED SALMON
	101248	10/1.25 LB	SMOKED WILD ALASKAN SOCKEYE
	104058	2/3 LB	P/S SMOKED ATLANTIC SALMON
	204055	2/3 LB	CENTER-SLICED ATLANTIC SALMON
	303048	5/4.5 LB	SMOKED EASTERN NOVA BELLY

FLAVORED	03129	10/4 LB	P/S PASTRAMI SMOKED SALMON
----------	-------	---------	----------------------------

MISC. CUTS	03075	4 LB	SKIN-ON FULL-TRIM SMOKED SALMON
	04055	2/2-3 LB	CENTER-CUT SMOKED ATL. SALMON
	04050	2/2.5 LB	CENTER-SLICED SMOKED ATL. SALMON

SMOKED SABLEFISH

HOT/COLD	106014	8/1.5 LB	COLD SMOKED SABLEFISH
	106021	8-12/.5 LB	HOT SMOKED SABLEFISH PIECES

SMOKED WHITE FISH

WHOLE	05017	6/2 LB	WHL SMOKED LG. WHITEFISH
	05024	7/1.5 LB	WHL SMOKED MED. WHITEFISH

SALADS	27026	4/5 LB	5LB SMOKED WHITEFISH SALAD 4PK
--------	-------	--------	--------------------------------

THAWED - SHELF LIFE 45 DAYS
THAWED - SHELF LIFE 21 DAYS
THAWED - SHELF LIFE 45 DAYS
THAWED - SHELF LIFE 45 DAYS
THAWED - SHELF LIFE 21 DAYS
THAWED - SHELF LIFE 45 DAYS
THAWED - SHELF LIFE 45 DAYS
THAWED - SHELF LIFE 45 DAYS
THAWED - SHELF LIFE 45 DAYS
THAWED - SHELF LIFE 30 DAYS

THAWED - SHELF LIFE 45 DAYS
THAWED - SHELF LIFE 45 DAYS
THAWED - SHELF LIFE 45 DAYS
THAWED - SHELF LIFE 45 DAYS

THAWED - SHELF LIFE 14 DAYS
THAWED - SHELF LIFE 30 DAYS

THAWED - SHELF LIFE 14 DAYS
THAWED - SHELF LIFE 14 DAYS

THAWED - SHELF LIFE 45 DAYS

ORDERING INFORMATION

ORDER MONDAY BY 3PM, LANDS FRIDAY



Gourmet quality to the everyday shopper, from classic nova lox to flavored innovations like everything bagel and honey-maple salmon, all with the heritage and care of a century-old smokehouse.

RETAIL

SMOKED SALMON

NOVA

04065	12/4 OZ	SMOKED NOVA SALMON
04072	12/8 OZ	SMOKED NOVA SALMON
04096	12/16 OZ	SMOKED NOVA SALMON

FLAVORED

03307	12/3 OZ	SMOKED SALMON W/ MIKE'S HONEY
04201	12/4 OZ	EVERYTHING BAGEL SMOKED SALMON
12213	12/4 OZ	HONEY MAPLE SMOKED SALMON
12220	12/4 OZ	KANSAS CITY BBQ SMOKED SALMON
12237	12/4 OZ	LEMON GARLIC SMOKED SALMON

KIPPERED

20140	8/8 OZ	PRE-PACK KIPPERED SALMON
-------	--------	--------------------------

DOUBLE SMOKED

15054	12/4 OZ	SCOTTISH DOUBLE SMOKED SALMON
-------	---------	-------------------------------

GRAVLAX

15245	12/4 OZ	SCANDINAVIAN GRAVLAX SALMON
-------	---------	-----------------------------

SMOKED WHITEFISH

PORTION

05226	12/7 OZ	SMOKED WHITEFISH PORTION
-------	---------	--------------------------

SALADS

70272	12/7 OZ	SMOKED WHITEFISH SALAD
-------	---------	------------------------

HERRING

FLAVORED

24067	12/32 OZ	HERRING IN WINE SAUCE
24117	12/12 OZ	HERRING IN WINE SAUCE
24124	12/12 OZ	HERRING IN CREAM SAUCE
24155	12/12 OZ	HERRING IN DILL SAUCE

THAWED - SHELF LIFE 42 DAYS
THAWED - SHELF LIFE 42 DAYS
THAWED - SHELF LIFE 42 DAYS

THAWED - SHELF LIFE 27 DAYS
THAWED - SHELF LIFE 42 DAYS
THAWED - SHELF LIFE 27 DAYS
THAWED - SHELF LIFE 27 DAYS
THAWED - SHELF LIFE 27 DAYS
THAWED - SHELF LIFE 27 DAYS

THAWED - SHELF LIFE 42 DAYS

THAWED - SHELF LIFE 42 DAYS

THAWED - SHELF LIFE 42 DAYS

THAWED - SHELF LIFE 42 DAYS

SHELF LIFE 365 DAYS
SHELF LIFE 365 DAYS
SHELF LIFE 365 DAYS
SHELF LIFE 365 DAYS



SPENCE & CO LTD.

Known for refined European-style smoking, Spence & Co. delivers delicately balanced gravlax, Scottish salmon, and rich smoked whitefish



SMOKED SALMON

TRADITIONAL

02496	6/4 OZ	NEW YORK STYLE NOVA LOX
03537	6/4 OZ	TRAD. SCOTTISH SMOKED SALMON
12366	6/4 OZ	WILD SOCKEYE SMOKED SALMON
610034	6/4 OZ	CLASSIC SMOKED SALMON

GRAVLAX

100010	6/4 OZ	SCANDINAVIAN GRAVLAX SALMON
--------	--------	-----------------------------

THAWED - SHELF LIFE 18 DAYS
THAWED - SHELF LIFE 18 DAYS
THAWED - SHELF LIFE 18 DAYS
THAWED - SHELF LIFE 18 DAYS

THAWED - SHELF LIFE 18 DAYS